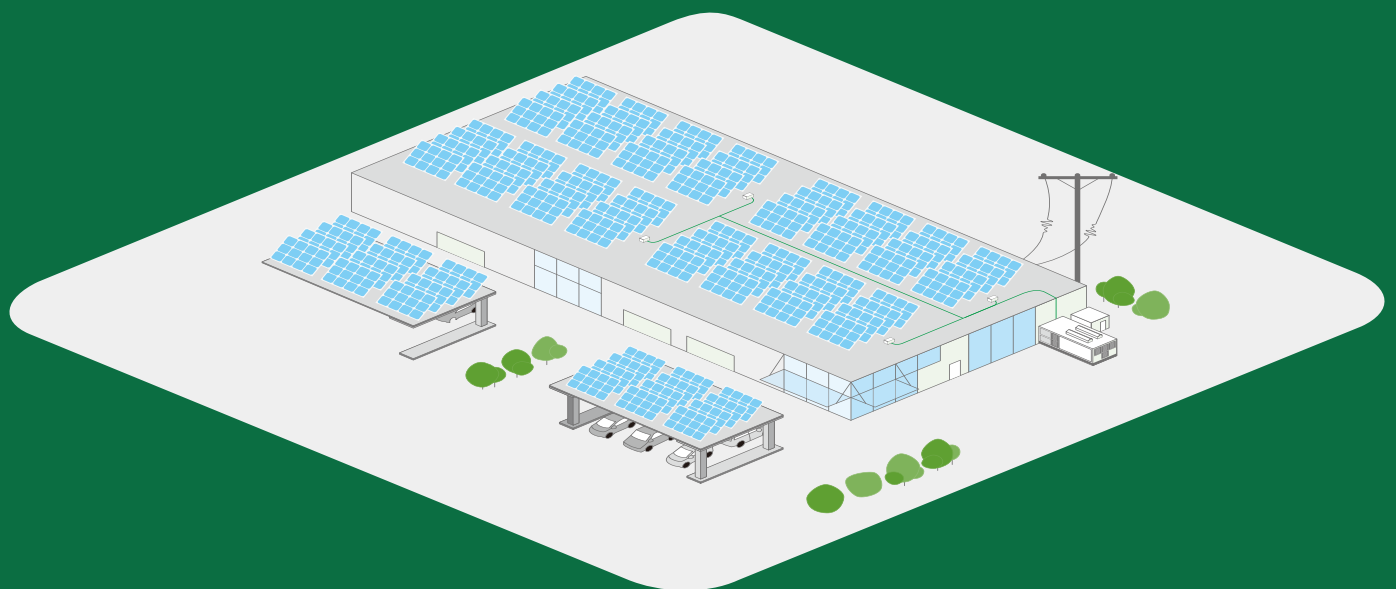


COMPLETE SOLAR SYSTEM

COMMERCIAL ON GRID
PHOTOVOLTAIC SOLAR SYSTEM



COMMERCIAL ON GRID

10KW-20KW-30KW-50KW-100KW-500KW



Product Description

Sunpal Power's Commercial Solar PV System are ideally suited for any business that is looking to reduce rising energy costs and hedge against future energy inflation. Our pre-engineered kits are suitable for most installation sites including commercial roof tops and ground mounting locations.

Sunpal Power's Commercial Solar PV System include all the necessary BOS components making turnkey projects that much easier. Choose from our standard line of pre-configured commercial kits or let us design a 10kW to 500kW customized project that fits your specific installation requirements. We offer flexibility in design and product selection that will ensure success in any solar project.

Product Benefits

- Hedge yourself against future utility increases
- Sell excessive power back to the utility grid (requires net metering)
- Solar modules have up to a 25 years warranty and a typical lifetime of 40+ years
- Reduce your building's operating costs
- Low maintenance/high reliability

Common Application

- Factories
- Distribution centers
- Shopping centers
- Office buildings
- Libraries
- Warehouses
- Schools

COMMERCIAL ON-GRID

PV System

Include

- Solar modules
- Solar on-grid inverter(3 phase)
- Custom roof mounting system
- PV Cable
- DC and AC disconnects
- Wire management kits



PRODUCT MODEL	SP10KW3-ON	SP20KW3-ON	SP30KW3-ON	SP50KW3-ON	SP100KW3-ON	SP500KW3-ON
PV System Size Nominal(kWp)	11.2	22.4	33.6	56	112	560

PV MODULE SPECIFICATIONS(*Mono)

Power (W)	280
Vmp (V)	31.8
Voc (V)	38.8
Isc (A)	9.33
Imp (A)	8.81
Dimensions (L x W x H) (mm)	1650*992*35
PV Module weight (kg)	18.6
Certifications	CE / TUV (IEC 61215 & IEC 61730) / UL (UL1703)

*Polycrystalline PV modules also available up on request

INVERTER SPECIFICATIONS

Inverter Size (Kw)	10	20	30	50	50	50
Total Number of Inverters		1		1	2	10
Max DC Power (W)	11.5	23	34		55	
Max DC Voltage (V)		1000			1100	
MPPT Voltage Range (V)		200 - 800			200 - 1000	
No. of MPPTS/Max Strings	2 / 4	4 / 8	4 / 8		4 / 12	
Max AC Power (kW)	11	22	33		50	
Max Output Current (A)	16.7	33.3	50		80	
AC Nominal Voltage/Voltage Range (V)		400 / 313 - 470			400 / 304 - 460	
AC Grid Frequency Range (Hz)		50 / 60			50 / 60	
Number of Phases		3			3	
Dimensions (W x H x D) (mm)	430 x 613 x 269	530 x 700 x 357	530 x 700 x 357		630 x 700 x 357	
Inverter Weight (kg)	39	57.2	58.2		53	
Certifications	UL 1741 / UL 1998 / UL 1699B / IEEE 1547 / FCC Part 15 (Class A & B) / CAN / CSA C2 EN50438 / G83/2 / G59/3 / AS4777.2: 2015 / VDE0126-1-1 / IEC61727 / VDEN4105					

*240V/480V UL inverters also available upon request

BOS

DC/AC Disconnect	2 / 1	4 / 1	6 / 1	10 / 1	20 / 2	100 / 10
*PV Wire Harness - 4mm (m)	200	400	600	1000	2000	10000
*Ground Wire - 4mm (m)	100	100	200	300	400	1000

*Extra wire is available up request

SYSTEM LAYOUT

Number of Modules	40	80	120	200	400	2000
Number of Inverters		1		1	2	10
PV Array Surface Area (m ²)	68	136	204	340	680	3400
PV Array Weight (kg)	744	1488	2232	3720	7440	37200
PV Module	No. of PV Modules / String	20			20	
	Total Strings	2	4	6	10	100
String	String Voc (V)	776				
Configuration	String Vmp (V)	636				
	String Imp (A)	8.81				

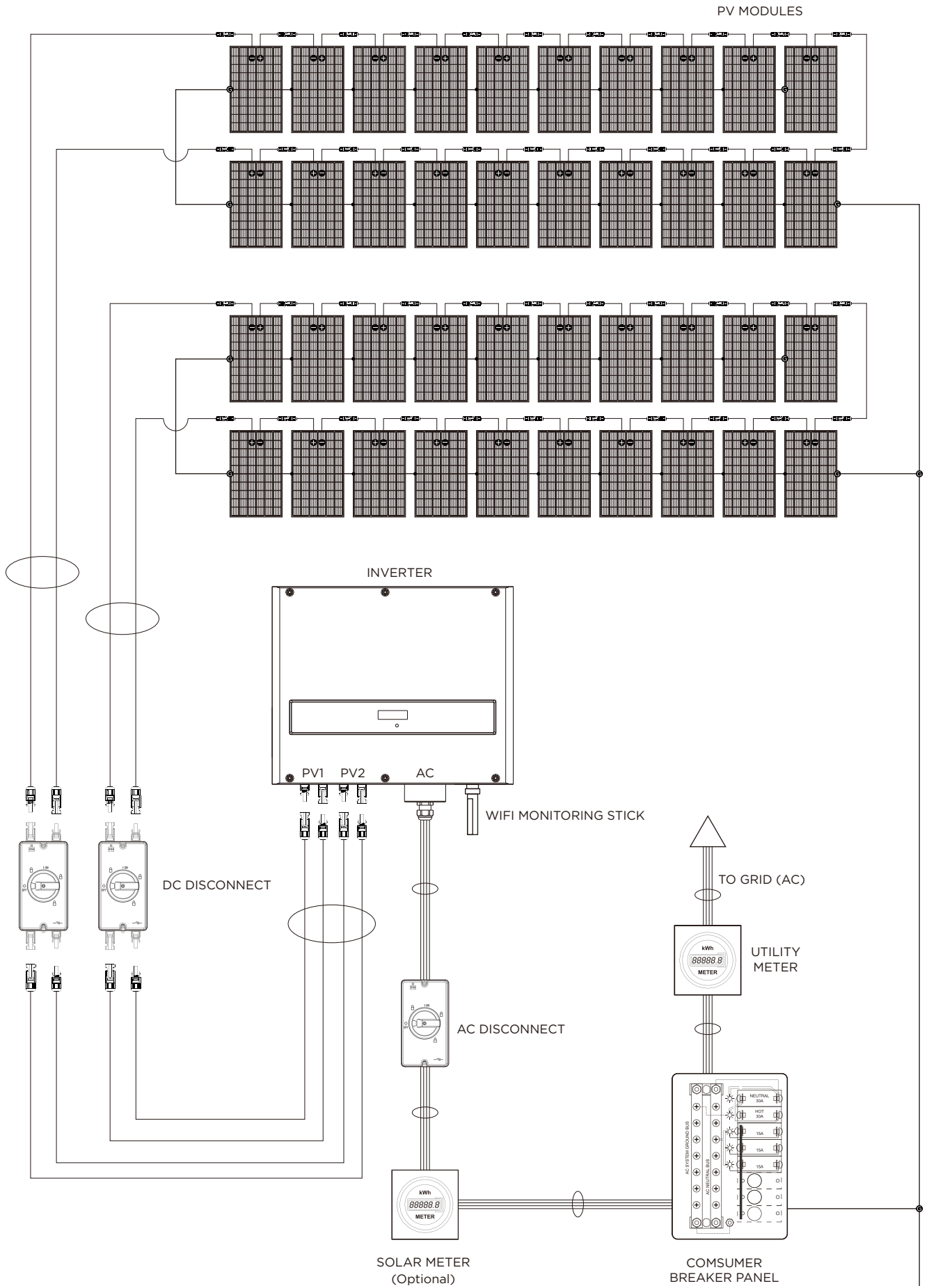
PRODUCTION ESTIMATES (kWh AC)

*Projectd Yearly Output at 4 PSH / Day	38.1	76.2	114.2	190.4	380.8	1904
*Projectd Yearly Output at 5 PSH / Day	47.6	95.2	142.8	238.0	476.0	2380
*Projectd Yearly Output at 6 PSH / Day	57.1	114.2	171.4	285.6	571.2	2856

*Based on 85% system efficiency (formula = DC Power x Peak Sunshine Hours / Day x System Efficiency) (PSH = Peak Sunshine Hours)

SYSTEM OPTIONS

Monitoring Device	Wi-Fi Model or GPRS Model
PV Module Type	Monocrystalline or Polycrystalline 60 / 72 Cells
Mounting System Types	Metal Roof, Asphalt Shingle, Tile Roof, Tin Roof, Flat Concrete





Phone: +86 551 6586 5992
WhatsApp: +86 183 0554 5727
Email: info@sunpalpower.com

SUNPAL POWER CO.,LTD.
West Changjiang Road,Shushan District,
Hefei City,Anhui Province,China.

www.sunpalpower.com